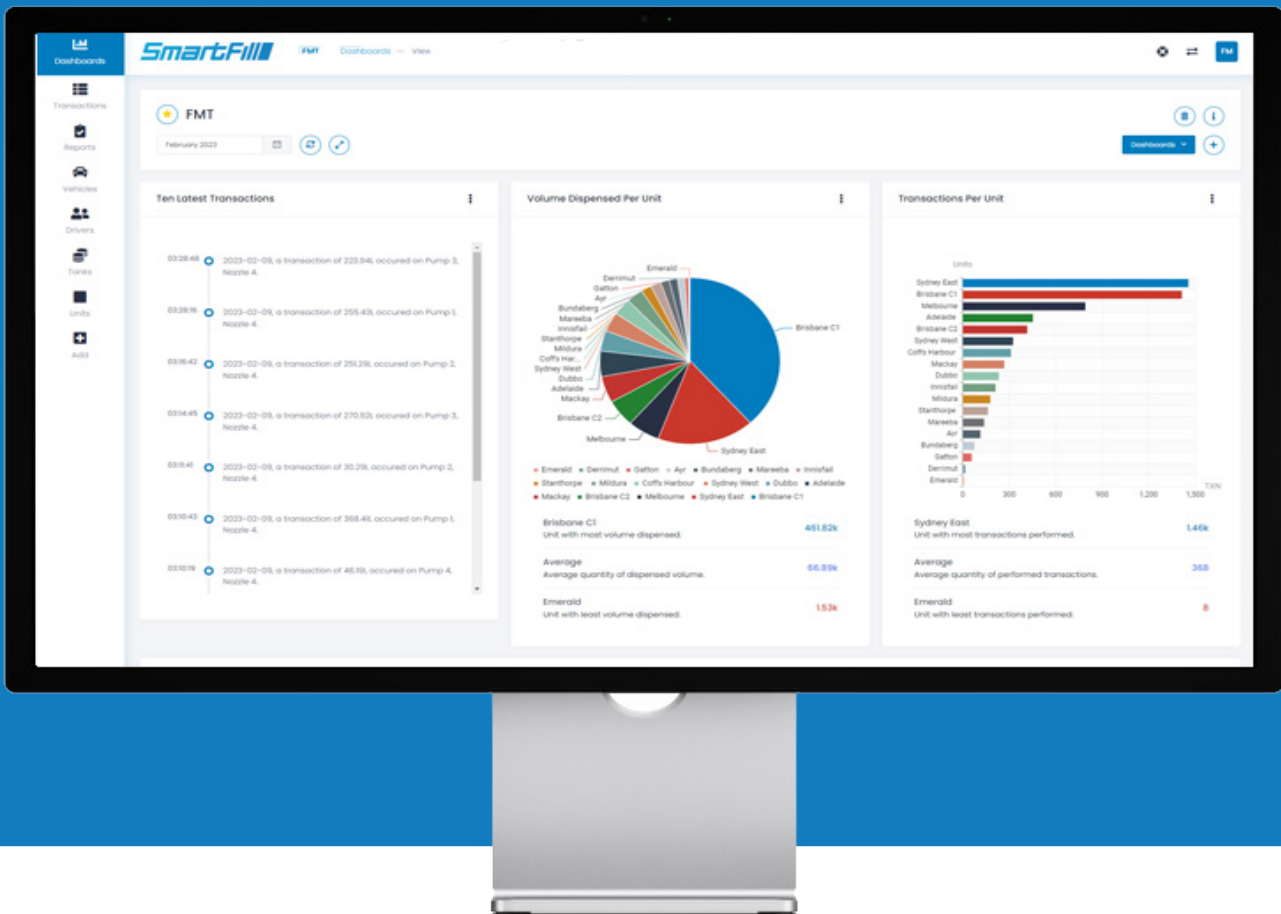


# SmartFill

## PRO REPORTS



With six pre-configured reports, virtual tank monitoring, and real-time graphical displays of tank levels and fuel movements, you'll enjoy unrivaled oversight of your fuel operations. And with a constantly updated dashboard and customizable email reports delivered straight to your inbox on a daily, weekly, or monthly basis, you'll always have the data you need to make informed decisions.

Don't wait – sign up today to unlock the full potential of SmartFill PRO Reports.

## Inclusions

- **Retain all standard features and data access**

- **Gain:**

- Totals Reports
- Reconciliation Reports
- Service Reports
- Transaction Reports
- Consumption Reports
- Trip Consumption Reports
- The ability to automatically send ALL transactions to an email address on a chosen schedule.

- **Pro Reports comes with graphical displays of important data:**

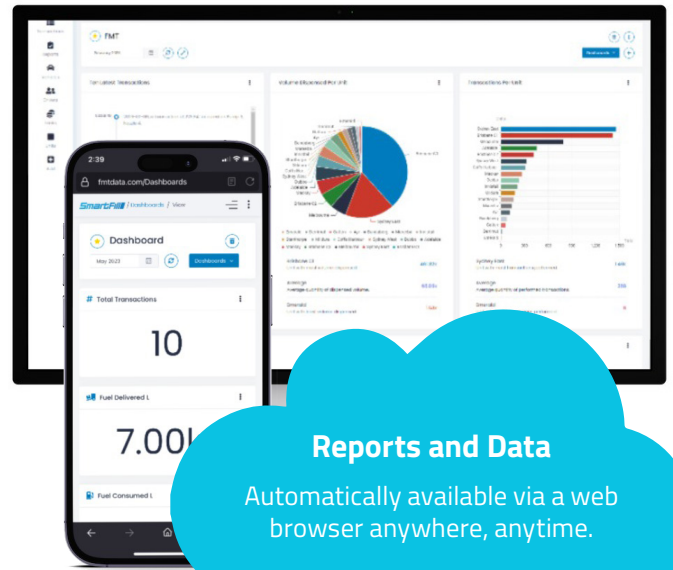
- Quick visual access to usage trends, pre-configured widgets and tank volumes.

- **Dashboard:**

- With the addition of the Dashboard that is only available with Pro Reports, at a glance you can see your current month, or a month of your choice.

- **Virtual Tanks:**

- With no hardware required, you can keep track of your tank's current volume with the ability to add deliveries and daily manual dips to your virtual tanks and have the system subtract fuel usage recorded by transactions and inflow/outflow meters.
- Alarms for set tank levels will be available with Virtual Tanks just as they are with tanks monitored by sensors and an ATG system, but without the associated costs.
- The accuracy of the Virtual Tank volumes will be dependent on the accuracy of the manual dips and entered deliveries, against the calibration of the transactions subtracted.



## Totals Reports

**Easily find the total amount of fuel used by every vehicle or driver within a specific time period.**

Set-up a Totals Report to be emailed with total fuel usage aggregated into simplified summaries.

The screenshot shows the 'Totals Report' configuration page. It has a 'Setup' section with a 'Configuration' sub-section. The fields are as follows:

- Name:** Report name
- Totals by:** Key / Code
- Then by:** None
- Period:** 01 April, 2023 - 30 April, 2023
- Filter:** Add Filter
- Schedule:** Disabled
- Offset time:** 0:00
- Offset day:** Same Day / Previous Day

# Reconciliation Reports

Reconcile your actual tank levels against calculated levels with ease.

You can also schedule the report to be emailed to you every week or month.

### Reconciliation Report

Report Period: Sat 1 Apr 2023 (00:00) - Sun 30 Apr 2023 (23:59)

#### Site: Gibson Creek Farm - 5703

Tank	Opening Dip Time	Opening Dip	Transactions	Bypass Transactions	Deliveries	Transfers	Adjustments	Closing Dip Time	Closing Dip	Calculated Dip	Variance	%	Notes
Farm - Gibson Creek Tank 1	2023-04-01 00:01:23	8953	5161.29	0.00	0.00	0.00	0.00	2023-05-01 00:01:52	3586	3792	-206	-2.30	

#### Site: Inkerman Mill - 3282

Tank	Opening Dip Time	Opening Dip	Transactions	Bypass Transactions	Deliveries	Transfers	Adjustments	Closing Dip Time	Closing Dip	Calculated Dip	Variance	%	Notes
Mill - Inkerman Tank 1	2023-04-01 00:05:06	35178	2376.59	0.00	0.00	0.00	0.00	2023-05-01 00:07:41	33193	32801	392	1.11	

#### Site: Inkerman Mill Boiler - 5707

Tank	Opening Dip Time	Opening Dip	Transactions	Bypass Transactions	Deliveries	Transfers	Adjustments	Closing Dip Time	Closing Dip	Calculated Dip	Variance	%	Notes
Mill - Inkerman Tank 2 Boiler	2023-04-01 00:09:25	2311	0.00	0.00	0.00	0.00	0.00	2023-05-01 00:04:57	2226	2311	-85	-3.68	

# Consumption Reports

Use your existing odometer or hourmeter refuelling data.

Automate this time-consuming task and monitor fuel consumption of your fleet on a per trip or monthly basis.

Simple filters allow you to choose which vehicles/plant are included in the report.

### Consumption

**NOTICE:** Consumption is calculated as the sum of all fuel transactions (except the first one) divided by the change in odometer or hourmeter multiplied by 100.

Report Period: Sat 1 Apr 2023 - Sun 30 Apr 2023

	Fleet No	Litres	Distance	Hours	L/100km	Litres / Hour
●	11	1089.40	1959.00	N/A	55.33	N/A
●	15	853.70	1659.00	N/A	51.46	N/A
●	17	N/A	N/A	N/A	N/A	N/A
●	18	1081.20	1801.00	N/A	60.03	N/A
●	23	277.97	896.00	N/A	31.02	N/A
●	32	261.94	653.00	N/A	40.11	N/A
●	47	228.53	630.00	N/A	36.27	N/A
●	48	N/A	N/A	N/A	N/A	N/A
●	49	146.78	334.00	N/A	43.95	N/A
●	52	303.57	827.00	N/A	36.71	N/A
●	60	253.36	370.00	N/A	68.48	N/A
●	63	231.29	345.00	N/A	67.04	N/A
●	70	383.17	850.00	N/A	45.08	N/A

# Transaction Reports

Automate downloading your transactions using a range of export filters.

Set up which transactions you want to receive and have them automatically emailed to you daily, weekly or monthly.

### Transactions

Report Period: Sat 1 Apr 2023 - Sun 30 Apr 2023

Date	Time	From	FOB / CHIP Number	Equipment Number	Description	Pump	Fuel Type	Units	Plant	Storage Location	Cost Object Value	Movement Type	Hours / Odometer	Make
2023-04-01	07:51:39	Mona Park Farm - 5646	3C98371A	Mona Park Harvesting Group 140 HSC	Misc equip KEY 2 Mona Farm	1	Diesel	Litres	6321	4090	KM400.1	221	0	Jerry Cans Air compressor and Burns
2023-04-01	08:11:30	Mona Park Farm - 5646	2C850819	10047659	Harvester Case 8000 71703C	1	Diesel	Litres	6322	4090	KS400.1	221	8736	CASE
2023-04-01	08:54:47	Pioneer Mill LV - 5649	39257845	10040017	Forklift Crown 7 Tonne	1	Diesel	Litres	6344	4090	172126	201	0	Crown
2023-04-01	14:52:46	Gibson Creek Farm - 5703	33A6507A	10107411	Utility Toyota Hilux Rego 5710A3 - (Was 123X1W)	1	Diesel	Litres	6381	4090	J.G990.7	221	176890	Toyota
2023-04-01	16:08:55	Mona Park Farm - 5646	AC5AD419	10101299	Utility Toyota Hilux 216XHK	1	Diesel	Litres	6321	4090	JM990.7	221	299894	Toyota
2023-04-01	16:13:00	Mona Park	7CD3371A	10103431	Transporter Case IH	1	Diesel	Litres	6321	4090	KM400.1	221	4987	Case

## Dashboard

Master your fuel data in real time and drill down where needed or create an instant report.

