

SmartTag

Automatic Vehicle Identification



Features

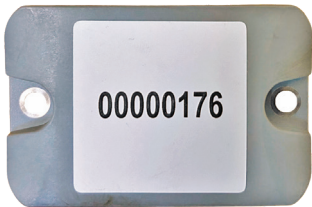
- Automates the activation of fuelling system
- Detects when the nozzle is removed from the vehicle and terminates the transaction to prevent fuel theft
- Can restrict fuel usage by fuel type, fill limit by vehicle, daily/weekly allowances and time-of-day access
- Modular design allows for rapid installation and repair
- Removable, rechargeable battery so you're never left vulnerable and unprotected
- Requires minimal technical skill to install or operate
- Provides a notification in the event of low battery
- Capable of multi-nozzle use on Gilbarco, Wayne, Compac, TT and Tatsuno dispensers
- Suits most commonly available fuel nozzles and vehicles
- Housed in a tough, weather-proof enclosure
- Adjustable read range to suit application specific needs
- Small, easy to install RFID tags
- Extensive, professional network of support

CLOUD BASED TECHNOLOGY | NO ONGOING COSTS

SmartTag

Technical Specifications

Nozzle Reader Dimensions (H x W x D): 37mm X 97mm X 92mm (1.5" X 3.8" X 3.6")	Reader: Inbuilt UHF reader - EPC Class 1 Gen 2 compatible
Power Supply: 3.7V 6.4Ah Li-ion rechargeable battery	Read Distance: 10cm to 100cm (4" to 40") depending on orientation of SmartTag when installed
Battery Temperature Range: -67°F to 185°F (-55 °C to 85 °C)	Maximum Nozzles per system: 8 when used with a protocol system, but limited to 5 connecting at a time.
Battery Life: 1 year minimum (average of 40 transactions/day, average transaction time of 5 minutes)	Nozzles Supported: <ul style="list-style-type: none"> ▪ OPW 1" 7-HB and ¾" 11A Diesel ▪ Banlaw High Flow ▪ ZVA 25 Diesel, Slimline AdBlue ▪ Wiggins High Flow ▪ Husky X Diesel ▪ & Many more
Power Consumption: Sleep mode: ~0A. Active: 10mA average	
Tag Types: RFID Vehicle Mount Tags (Long-Range, RECOMMENDED) UHF PCB Tags (Short-Range), RFID Stickers (Mid-Range)	
Additional Equipment Required: SmartFill GEN 3 fitted with a SFM2055 Wireless Module.	Fuel Types: Suitable for use with Diesel, DEF, AdBlue and other non-hazardous liquids.



Vehicle Mount RFID Tag (ST1012)

Our recommended choice is the Vehicle Mount RFID Tag. This was crafted to suit the toughest environments while being compact and flexible enough to be widely used throughout your fleet. It works best on metal surfaces, with read ranges up to 60cm. It can be installed with either epoxy or can be screwed straight into the surface for maximum holding power.



RFID Sticker Tag (ST1013)

For all non-metal surfaces, the RFID Sticker Tag is the best choice. It reads up to 40cm and it works best on plastic or fibreglass which makes it perfect for light vehicle applications. It's our thinnest solution at 0.7mm thick and can be installed in as little as 60 seconds. The RFID Sticker Tag also comes with a protective outer layer to keep it protected from the elements.



SmartTag PCB Tag (ST1011)

The SmartTag PCB Tag is our solution for a small footprint RFID tag that doesn't compromise on durability or usability. This tag has the shortest read range and is designed for situations where the Vehicle Mount RFID Tag is too wide to fit. It's suited for metal surfaces only.